

XP

4. A Internet Protocol (TCP/IP) Properties window will open up. Left click on Obtain an IP address automatically.

5. Left click on Use the following DNS server addresses. Enter your preferred and alternate DNS servers.

Richmond: 64.83.0.10

Richmond: 64.83.1.10

Philadelphia: 209.137.171.10

Philadelphia: 209.137.171.20

Delaware: 209.137.160.7

Delaware: 209.137.160.3

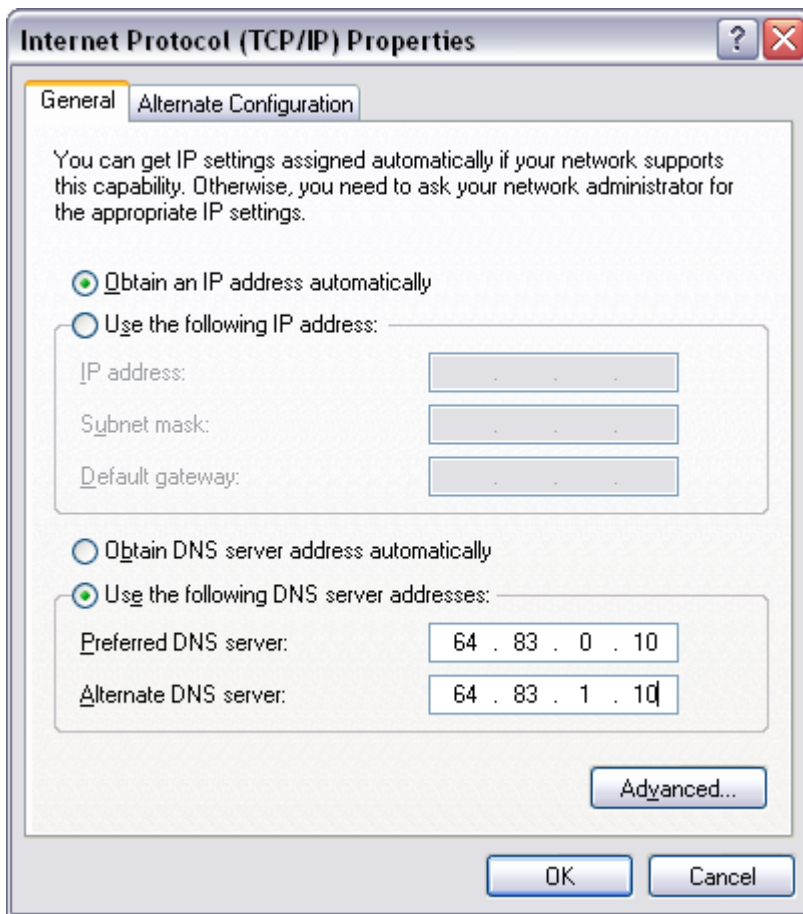
Michigan/Ohio: 71.4.96.36

Michigan/Ohio: 71.4.96.44

Georgia: 208.67.222.222

Georgia: 208.67.220.220

6. Click the OK button.



7. Now you should be back at the Local Area Connection Properties window. Click the OK button.

8. You should now be connected to the Internet.

Win 2000

4. A Internet Protocol (TCP/IP) Properties window will open up. Left click on Obtain an IP address automatically.

5. Left click on Use the following DNS server addresses. Enter your preferred and alternate DNS servers.

Richmond: 64.83.0.10

Richmond: 64.83.1.10

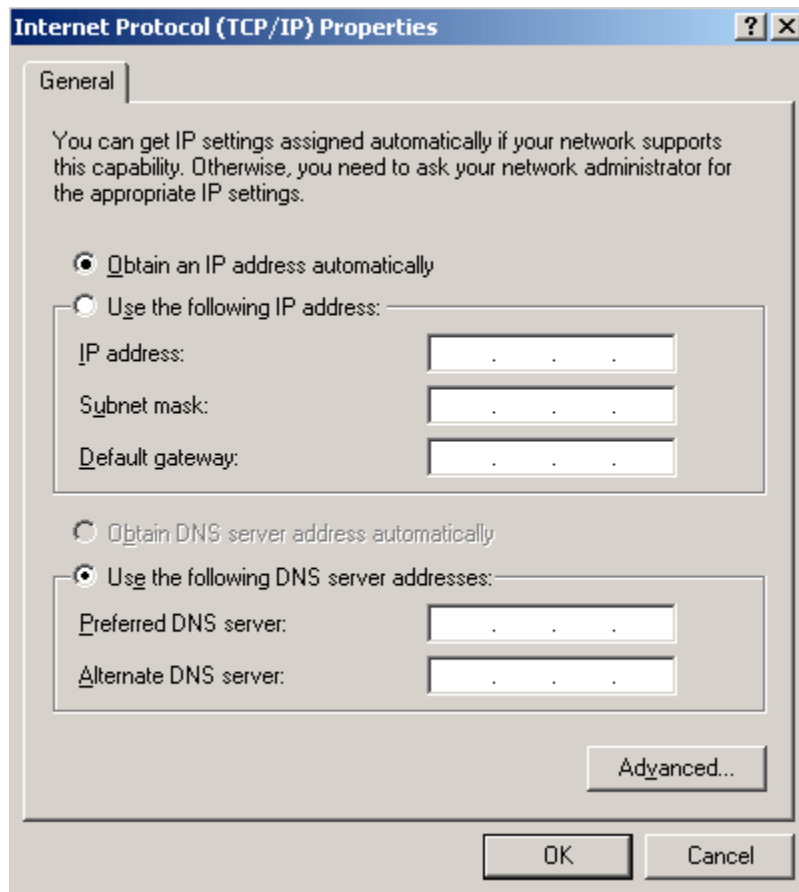
Philadelphia: 209.137.171.10

Philadelphia: 209.137.171.20

Delaware: 209.137.160.7

Delaware: 209.137.160.3

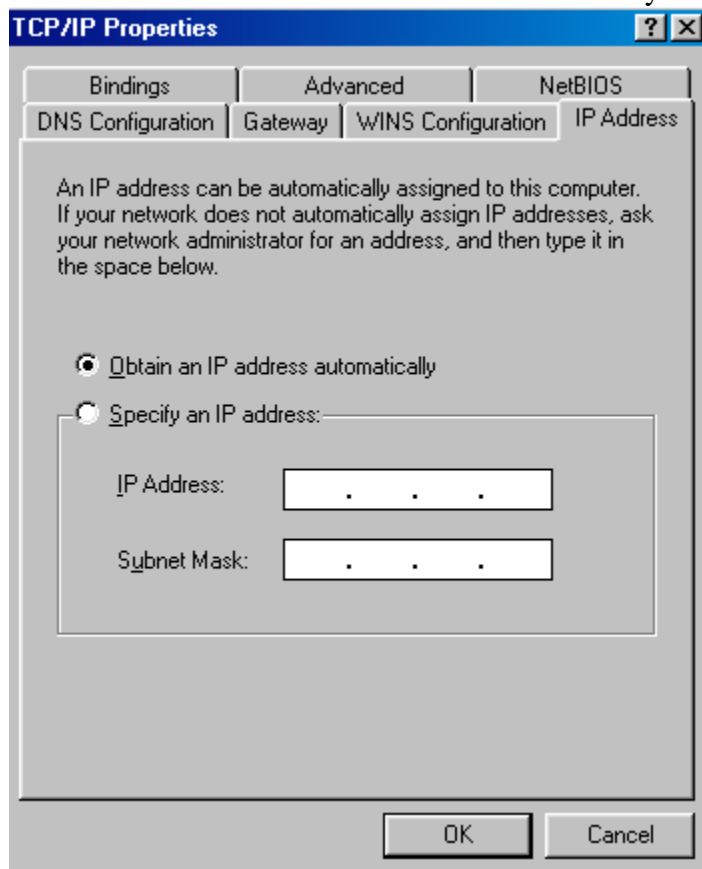
6. Click the OK button.



7. Now you should be back at the Local Area Connection Properties window. Click the OK button.
8. You should now be connected to the Internet.

ME

4. Left click on Obtain an IP address automatically.



5. Left click on the DNS Configuration tab.
6. Left click on Enable DNS.
7. Enter a name for your computer in the Host box.
8. Enter cavtel.net in the Domain box.
9. Enter your primary DNS server in the DNS Server Search Order box. Then click the Add button.
 - Richmond: 64.83.0.10
 - Richmond: 64.83.1.10
 - Philadelphia: 209.137.171.10
 - Philadelphia: 209.137.171.20
 - Delaware: 209.137.160.7
 - Delaware: 209.137.160.3
 - Michigan/Ohio: 71.4.96.36

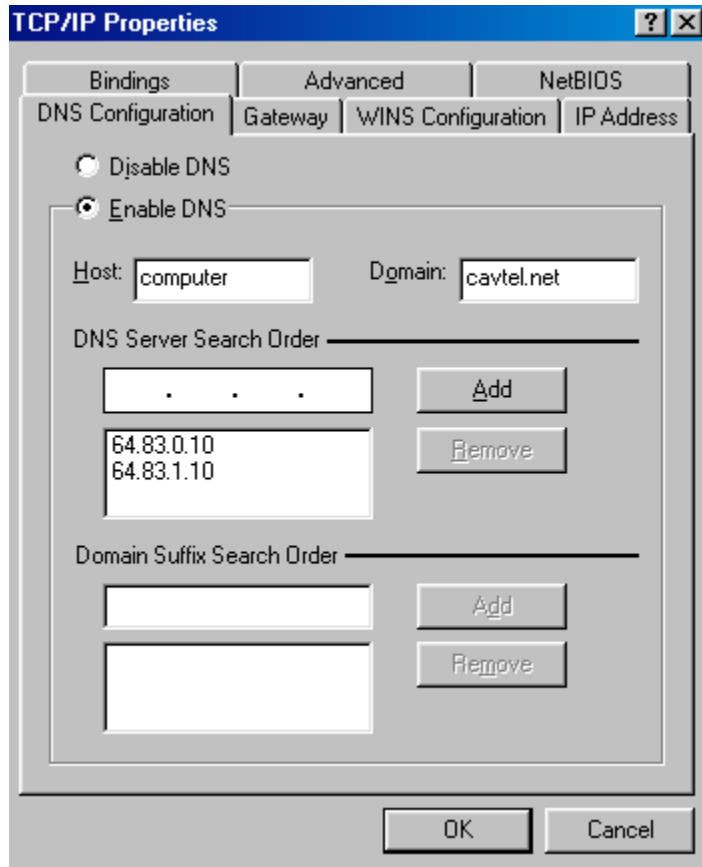
Michigan/Ohio: 71.4.96.44

Georgia: 208.67.222.222

Georgia: 208.67.220.220

10. Go back to the DNS Server Search Order box and enter your secondary DNS server and click the Add button.

11. Now click the **OK** button.

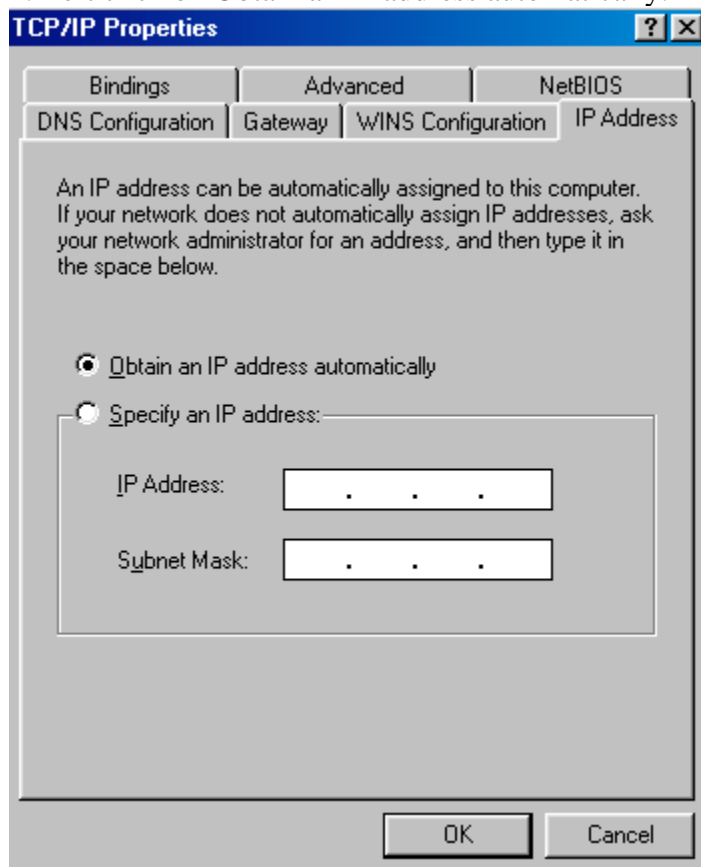


12. Now you should be back to the Network properties window. Click the OK button.

13. Your computer may prompt you to insert your CD-ROM at this point. After that you will need to restart your computer.

Win 95/98

4. Left click on Obtain an IP address automatically.



5. Left click on the DNS Configuration tab.

6. Left click on Enable DNS.

7. Enter a name for your computer in the Host box.

8. Enter cavtel.net in the Domain box.

9. Enter your primary DNS server in the DNS Server Search Order box. Then click the Add button.

Richmond: 64.83.0.10

Richmond: 64.83.1.10

Philadelphia: 209.137.171.10

Philadelphia: 209.137.171.20

Delaware: 209.137.160.7

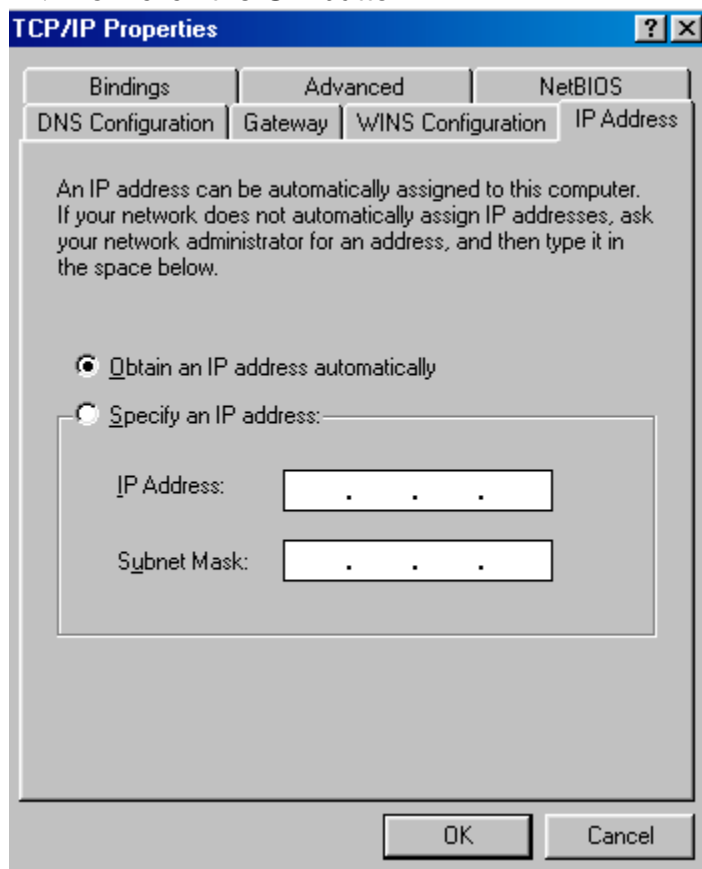
Delaware: 209.137.160.3

Michigan/Ohio: 71.4.96.36

Michigan/Ohio: 71.4.96.44
Georgia: 208.67.222.222
Georgia: 208.67.220.220

10. Go back to the DNS Server Search Order box and enter your secondary DNS server and click the Add button.

11. Now click the **OK** button.



12. Now you should be back to the Network properties window. Click the OK button.
13. Your computer may prompt you to insert your CD-ROM at this point. After that you will need to restart your computer

DSL MAC (I don't have any MAC screenshots)

Macintosh OS 9 or Earlier:

1. In the Apple menu, choose Control Panels -> TCP/IP.
2. In the "Connect via" menu, choose Ethernet.
3. In the Configure menu, choose Using DHCP Server.
4. Close the TCP/IP control panel and save changes.

Macintosh OS X 10.0–10.4:

1. In the Apple menu, choose System Preferences -> Network.
2. In the Show menu, choose Built-in Ethernet.
3. Select the TCP/IP tab.
4. In the Configure menu, choose Using DHCP.* (If you do not see Using DHCP, select the PPOE tab and uncheck "Connect using PPOE". Then select the TCP/IP tab once more. You should now see Using DHCP as a choice.)
5. Click the Apply Now button in the bottom right corner of the window.
6. Close the Network window.